

Parktone

Primary School

Visitor & Volunteer Occupational Health and Safety (OHS) Induction Handbook

Prepared by : Catherine Gryszan
Date Prepared: 14th August 2025
Review Date: 14th August 2026

Visitor & Volunteer Occupational Health and Safety (OHS) Induction Handbook

Table of Contents

Introduction	1
Department Health, Safety and Wellbeing (HSW) Policy	2
Required conduct/behaviour.....	3
Access arrangements	4
Access.....	4
Traffic Management	4
OHS Induction	5
Site specific hazards.....	6
Asbestos.....	6
Hazardous Substances and Dangerous Goods	6
Animals/Wildlife.....	6
Emergency Management.....	7
Workplace Codes	7
Emergency Procedures	7
Leaving Site in an Emergency	7
Evacuation Point	7
Emergency Contacts	8
First Aid and Amenities	9
First Aid	9
Amenities	9
Hazard and Incident Reporting	10
Appendix A: Emergency Evacuation Map.....	11

Visitor & Volunteer Occupational Health and Safety (OHS) Induction Handbook

Introduction

To comply with the requirements of the Victorian Occupational Health and Safety (OHS) Act 2004 and the Victorian OHS Regulations 2017 the Department of Education and Training (the Department) has implemented an OHS Management System (OHSMS) in all Victorian Government schools.

The OHSMS requires all visitors and volunteers to:


- report to the general office or designated site contact upon arrival at site
- complete an OHS induction using the Volunteer OHS Induction Checklist
- sign in and out and ensure their visitors pass is worn at all times whilst on Department or other premises
- have a current Working with Children Check, where applicable.

Visitor & Volunteer Occupational Health and Safety (OHS) Induction Handbook






Department Health, Safety and Wellbeing (HSW) Policy

The Department has the *Health, Safety and Wellbeing Policy*, which has been endorsed by the Department Secretary and can be seen below:

Health, Safety and Wellbeing Policy



Education and Training

Scope: This Policy applies to all employees, visitors, volunteers and contractors in Department of Education and Training (DET) workplaces and activities, and instances when performing work offsite. The Department commits, so far as reasonably practicable, to:

Management Commitment 	<p>Support and value its people and recognise a legal and moral commitment to building a positive workplace culture, ensuring healthy and safe working and learning environments by:</p> <ul style="list-style-type: none"> providing and integrating a robust and credible, Occupational Health and Safety (OHS) Management System that aligns with legislative requirements and the Department's strategic direction and operations providing and maintaining inclusive workplaces that mitigate risks to physical and psychological health and safety outlining expectations and accountabilitys, and empowering leaders and employees to play an active role in maintaining healthy and safe workplaces embedding and promoting a culture of shared responsiveness, willingness, and ownership, relating to reporting, and addressing health, safety and wellbeing risks providing and applying a robust injury management framework to foster and build a strong culture of early intervention, rehabilitation and return to work.
Consultation Commitment 	<p>Consult, collaborate, and communicate with employees including health and safety representatives on:</p> <ul style="list-style-type: none"> identifying hazards, assessing risks, and making decisions about the measures to control risks to health and safety and proposed changes to the workplace that may affect the health, safety, and wellbeing of persons health, safety, and wellbeing issue resolution provision of health, safety and wellbeing information, training, instruction, and supervision the importance of giving employees a reasonable timeframe to express their views and concerns and that these are taken into account when making decisions that may affect their health, safety and wellbeing flexible work arrangements and family friendly work practices to support and maintain an inclusive, diverse, respectful adaptive, workforce.
Drive Continuous HSW Improvement Commitment 	<p>Support continual health, safety and wellbeing improvement by:</p> <ul style="list-style-type: none"> improving the suitability and effectiveness of the OHS Management System through regular monitoring and review of policies and procedures establishing and monitoring progress towards measurable objectives and targets aimed at reducing work-related injury and ill health and improving safety performance using data to provide an evidence-based approach for setting the Department's strategic direction and identifying measurable objectives and targets allocating adequate resources to efficiently integrate and maintain the OHS Management System to comply with relevant legal and compliance obligations.
Building Capability Commitment 	<p>Support building capability by:</p> <ul style="list-style-type: none"> embedding individual health, safety, and wellbeing accountabilitys for all employees across the Department embedding legislative and Department health and safety requirements in all policies and procedures increasing awareness and improving utilisation of the safety supports and resources available providing access to transparent and robust health, safety and wellbeing information, training, instruction, and documentation strengthening leadership capability by improving understanding of applying and implementing health, safety and wellbeing supports and resources available.
Risk Management Commitment 	<p>Support the prevention of workplace injuries and ill health by:</p> <ul style="list-style-type: none"> strengthening systems of work for identifying, assessing, controlling, monitoring, and reviewing hazards and associated risks arising from task / workplace activities proactively aiming to identify hazards and eliminate (if not possible, minimise) risks, in the workplace by implementing controls in a timely manner promoting and improving the reporting of incidents, near misses, injuries and hazards and investigating where appropriate, to prevent recurrence providing an OHS Management System that is flexible and adaptable to the risk profile of Department workplaces implementing risk controls to achieve improved mental health and wellbeing outcomes and reduce psychosocial hazards in the workplace.

The Department employees, visitors, volunteers and contractors are required to take reasonable care for their own health, safety and wellbeing and others that may be affected by their actions or omissions. These parties will cooperate with the Department in adhering to health and safety requirements including following the Department's policies, procedures and/or instructions and participating in consultation and training.

The Department's OHS Management System sets out how this policy is to be implemented.



Jenny Atta
Secretary
19/01/2022

Visitor & Volunteer Occupational Health and Safety (OHS) Induction Handbook

Required conduct/behaviour

All visitors and volunteers are expected to abide by the workplaces code of conduct while on site.

This includes:

- No smoking on school grounds or within four metres of an entrance to all Department workplaces.
- No alcohol or drugs are to be consumed on any Department premises. Any volunteer under the influence will be dismissed.
- No offensive language is permitted on any Department premises.
- Noise must be kept to a minimum. If this is not practicable, then non-urgent work should be scheduled outside of school hours, where possible.
- Possessions, materials, and equipment should be secured and not left unattended.
- Abide by the workplaces traffic management procedures.
- Entrance to other areas of the Department workplace aside from the work area is prohibited, unless otherwise agreed to.
- Remove all litter and debris from the workplace.
- Report any problems, hazards, or incidents to the principal or their delegate.
- Dress appropriately and wear the correct personal protective equipment suitable.
- No pets are permitted on Department premises.

Visitor & Volunteer Occupational Health and Safety (OHS) Induction Handbook

Access arrangements

Access

All volunteers must report to the general office and sign in upon arrival. This requirement is indicated on signage located at all entrances to the school, see below:



Traffic Management

Visitors and volunteers driving vehicles are to enter and exit the school grounds via the following locations:

- Carpark off Robert Street
- Street parking within the restrictions

Designated pedestrian crossings are:

- McSwain Street pedestrian crossing

Vehicles entering school grounds must adhere to all traffic signage. Where there is no signage, vehicles are to move at walking pace at all times. If a vehicle has limited visibility or mobility, a spotter should be used when the vehicle is in motion.

Visitors and Volunteers are not to operate vehicles on, or around, school grounds during designated drop off/pick up times or during break times:

- Drop off: **8:40am – 9:00am**
- Recess: **10:40am – 11:10am**
- Lunch: **12:50pm – 1:50pm**
- Pick up: **3:30pm – 3:45pm**

Visitor & Volunteer Occupational Health and Safety (OHS) Induction Handbook

OHS Induction

Via Compass or upon arrival at the site, you will be required to complete an OHS Induction covering the site-specific risks.

The visitor and volunteer OHS induction is valid for 12 months.

Workplace	Parktone Primary School	
Brief description of works		
General OHS Induction – The principal or their delegate is to ensure that visitors and volunteers have been provided with the following information and/or instructions.	Provided	
Department Health and Safety and Wellbeing (HSW) Policy	<input type="checkbox"/> Yes	
Required conduct/behaviour	<input type="checkbox"/> Yes	
Security access arrangements / Traffic Management Plan	<input type="checkbox"/> Yes	
Introduction to First Aid Officer(s) and location of First Aid Room/Kits	<input type="checkbox"/> Yes	
Location of emergency evacuation plans for your area	<input type="checkbox"/> Yes	
Location of Emergency Exits	<input type="checkbox"/> Yes	
Introduction to workplace Wardens / Incident Controller	<input type="checkbox"/> Yes	
Location of amenities	<input type="checkbox"/> Yes	
Location of Chemical Register and associated Safety Data Sheets	<input type="checkbox"/> Yes	
Information on hazard and incident reporting process	<input type="checkbox"/> Yes	
Current School Asbestos Management Plan and Division 5 Audit Report	<input type="checkbox"/> Yes <input type="checkbox"/> NA	
Introduction to school Asbestos Coordinator	<input type="checkbox"/> Yes <input type="checkbox"/> NA	
Plant and equipment Safe Work Procedures and personal protective equipment <i>(Note: all electrically powered plant and equipment are to be tested and tagged prior to use)</i>	<input type="checkbox"/> Yes <input type="checkbox"/> NA	
An overview of task(s) and relevant hazards and risks controls are communicated to volunteer workers as detailed in the Risk Assessment	<input type="checkbox"/> Yes <input type="checkbox"/> NA	
Signatures		
Principal or delegate		
<i>I certify that the below mentioned volunteer workers have completed an OHS induction.</i>		
Name:	Signature:	
	Date:	

Visitor & Volunteer Occupational Health and Safety (OHS) Induction Handbook

Site specific hazards

Asbestos

All schools are expected to have a Schools Asbestos Management Plan in the event of the discovery of suspected asbestos containing material (ACM) or the accidental disturbance of existing ACM.

If ACM has been identified in the school, the following process must be followed prior to the commencement of works:

- Asbestos Management Plan is available upon request at the school office
- Asbestos Coordinator – Catherine Gryszan
- Asbestos Register MUST be checked at the time of sign-in when the proposed work involves drilling, scraping, sanding, sawing or any other destructive process.
- if work is to be carried out in the vicinity of Asbestos Containing Material, the Asbestos Coordinator Genevieve Casonato – 0428 910 246 must be consulted prior to the commencement of work.
- asbestos containing material may only be removed by a licensed removalist.

Hazardous Substances and Dangerous Goods

If transporting hazardous substances or dangerous goods onto site, the principal or their delegate must be informed. You must complete a Safe Work Method Statement or equivalent to outline the controls methods you will use to ensure that the risks of the hazardous substances and/or dangerous goods are managed.

Such controls may include, but are not limited to:

- the provision of Safety Data Sheets (SDS)
- correct labelling of containers
- correct storing and handling of containers
- correct disposal of any waste
- provision of personal protective equipment (PPE).

Animals/Wildlife

There is the potential to come into contact with domestic animals and wildlife while on this site. Should this occur, you must:

- do not approach any domestic animals (e.g., dogs) or dangerous wildlife
- report the sighting of any domestic animals or dangerous wildlife to the principal or their delegate
- do not reach into any holes or gaps in the buildings without first checking to see if it is safe.

Visitor & Volunteer Occupational Health and Safety (OHS) Induction Handbook

Emergency Management

Workplace Codes

In the event that a code is called, please obey the following instructions:

- Code – Lockdown Alarm: Lockdown, follow instructions
- Code – Evacuation Alarm: Evacuation, follow instructions
- PA Announcement – Shelter In Place, follow instructions

Emergency Procedures

On hearing the alarm:

- switch off all equipment
- proceed to the advised assembly area
- report to one of the wardens
- do not leave the assembly area until advised.

Leaving Site in an Emergency

All visitors and volunteers are required to proceed to the evacuation point and remain there until given clearance to leave by the Incident Controller or principal or their delegate.

Evacuation Point

The evacuation point is located at the oval behind the hall; refer to Evacuation Map (Appendix A).

Visitor & Volunteer Occupational Health and Safety (OHS) Induction Handbook

Emergency Contacts

School contacts

Principal	Genevieve Casonato	9580 1207 / 0428 910 246
Assistant Principal	Melanie Bach	9580 1207 / 0438 445 612
Asbestos Co-ordinator	Catherine Gryszan	9580 1207 /
Business Manager	Nadine Robinson	9580 1207 /
General Office Number	Parktone PS	9580 1207

School after hours contacts

Principal:	Genevieve Casonato	0428 910 246
Business Manager:	Nadine Robinson	9580 1207

Emergency contacts

Police:	000
Fire:	000
Ambulance:	000
Poisons:	13 11 26

Visitor & Volunteer Occupational Health and Safety (OHS) Induction Handbook

First Aid and Amenities

First Aid

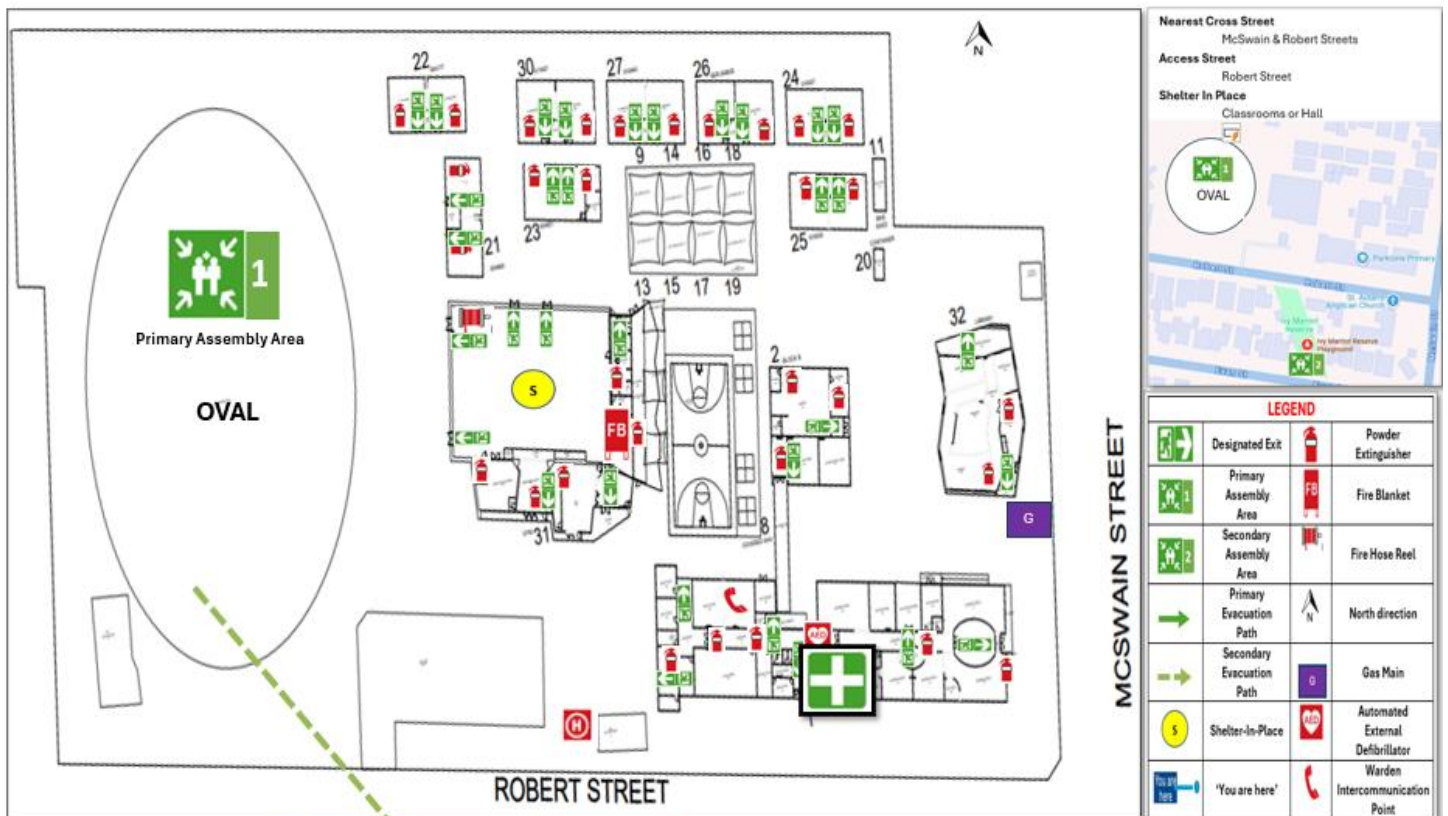
In the event of an injury:

1. if the injury is not serious, report or escort the injured party to the administration office for assistance
2. if the injury is serious ring 000, do not wait for first aid officer
3. stay with injured party. Send someone else to find the first aid officer or workplace manager
4. if no one else is available, ring the school number (9580 1207) and inform the office that someone is injured at your location
5. if trained, apply first aid to the injured party
6. once incident is over, fill in an incident report at the office.

FIRST AID AMENITIES

Parktone Primary School, 47 Robert Street, Parkdale VIC 3195

3rd February 2025



Visitor & Volunteer Occupational Health and Safety (OHS) Induction Handbook

Hazard and Incident Reporting

Any hazard or incident that poses a risk to the safety of a student, parent, visitor, volunteer or employee must be reported.

- Call 000 immediately to report any incident threatening life or property. This number will connect you to the following emergency services:
 - police for crime, injury that may not be accidental, or assault
 - ambulance for injury and medical assistance
 - fire brigade for fires, gas leaks and incidents involving hazardous and dangerous materials.
- Notify the administration office in person, or, if unable or unsafe to do so, notify someone via the emergency contact list.
- Principal is to report the incident on eduSafe Plus.
- Risk Register is available upon request at the school office
- Chemical Register is available upon request at the school office

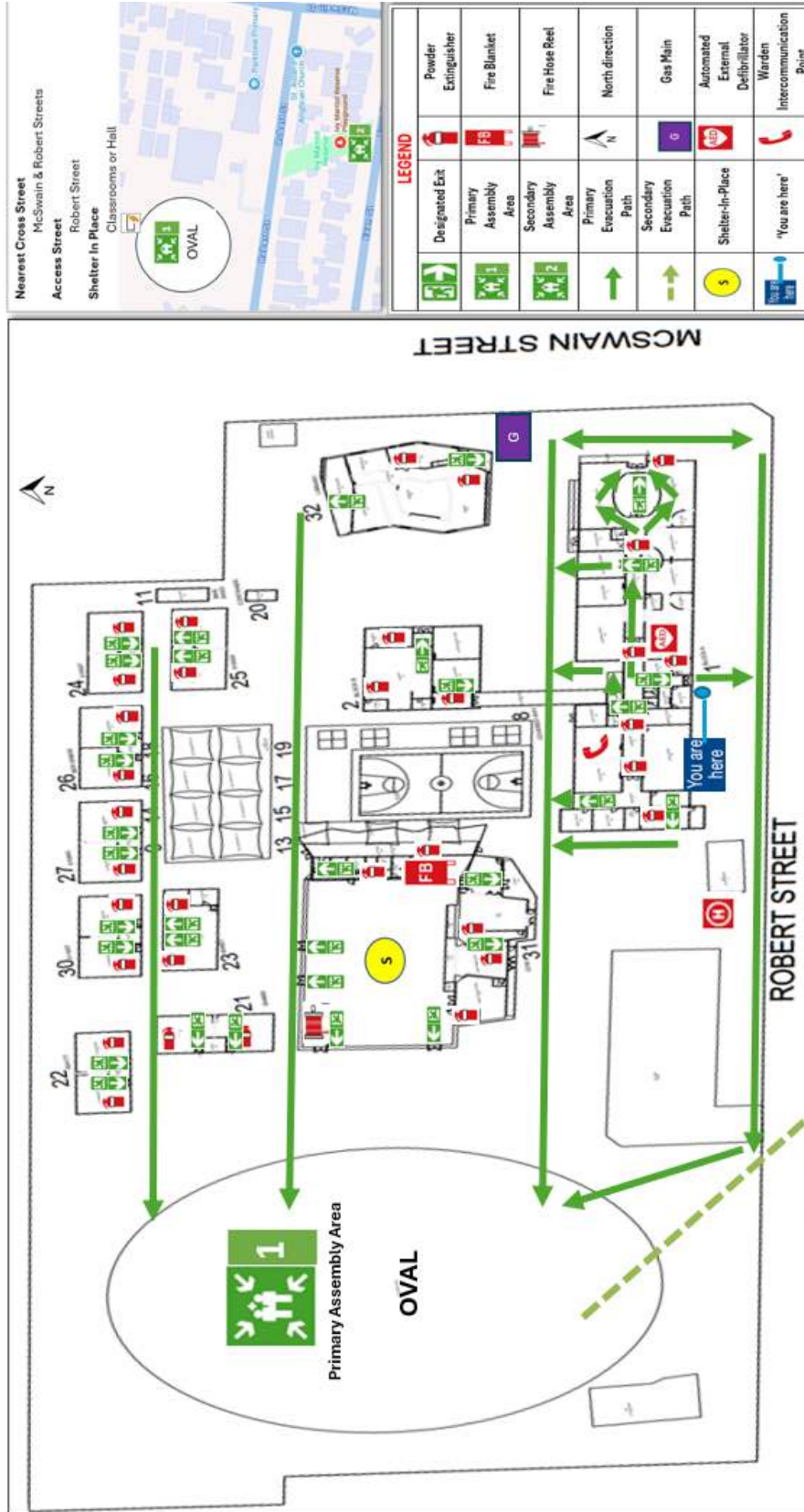
Visitor & Volunteer Occupational Health and Safety (OHS) Induction Handbook

Appendix A: Emergency Evacuation Map

EVACUATION DIAGRAM – Parktone Primary School

Parktone Primary School, 47 Robert Street, Parkdale VIC 3195

3rd February 2025



- R** REMOVE people from immediate danger
- A** ALERT others, call emergency services 000
- C** CONTAIN or isolate the threat if safe to do so
- E** EVACUATE to the designated evacuation assembly location

